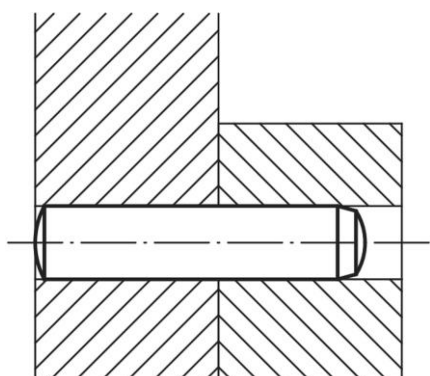


# DIN 6325

Goupille cylindrique

Cylindrical pins



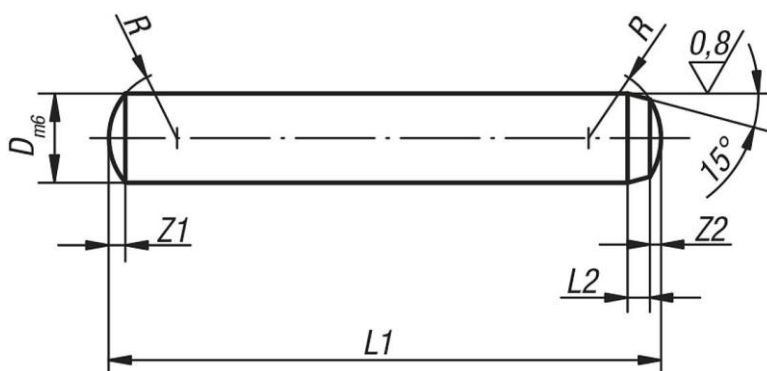
## Description

### Matière :

Acier à outils 1.2067.

### Finition :

Traité, dureté 550 – 650 HV 30 et rectifié.



D	L1 = Longueur	L2	R	Z1	Z2
2	6/8/10/12/14/16/18/20	0,6	2	0,3	0,18
2,5	6/8/10/12/14/16/18/20/22/24	0,7	2,5	0,4	0,25
3	8/10/12/14/16/18/20/22/24/28/30/32	0,8	3	0,45	0,3
4	8/10/12/14/16/18/20/22/24/28/30/32/36/40	1	4	0,6	0,4
5	10/12/14/16/18/20/22/24/28/30/32/36/40/45/50	1,2	5	0,75	0,5
6	10/12/14/16/18/20/22/24/28/30/32/36/40/45/50/55/60	1,5	6	0,9	0,6
8	12/14/16/18/20/22/24/28/30/32/36/40/45/50/55/60/70/80	1,8	8	1,2	0,8
10	16/18/20/24/28/30/32/36/40/45/50/55/60/70/80/90/100	2	10	1,5	1
12	18/20/24/28/30/32/36/40/45/50/55/60/70/80/90/100/120	2,5	12	1,8	1,3
14	24/28/32/36/40/45/50/55/60/70/80/90/100/120	2,5	16	2	1,3
16	24/28/32/36/40/45/50/55/60/70/80/90/100/110/120	3	16	2,5	1,7