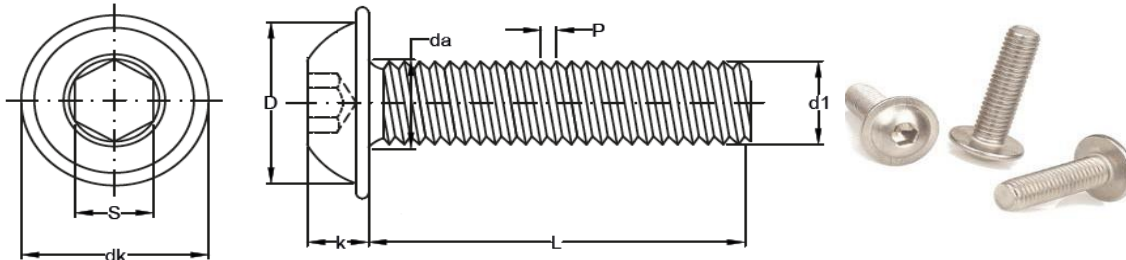


DINI 7380-2-ISO 7380-2

Vis six pans creux tête bombée à embase

Hexagon socket button head screw, with flange



P	0,50	0,70	0,80	1,00	1,25	1,50
S min.	2,02	2,52	3,02	4,02	5,02	6,02
da max.	3,6	4,7	5,7	6,8	9,2	11,2
k	1,40/1,65	1,95/2,20	2,50/2,75	3,00/3,30	4,10/4,40	5,20/5,50
D	5,40/5,70	7,24/7,60	9,04/9,60	9,97/10,60	13,47/14,10	16,1/16,5
dk	6,65/6,90	8,90/9,40	11,20/11,80	13,00/13,60	17,00/17,80	21,06/21,9
l/d1	M3	M4	M5	M6	M8	M10
5						
6	3x6	4x6	5x6			
8	3x8	4x8	5x8	6x8		
10	3x10	4x10	5x10	6x10	8x10	
12	3x12	4x12	5x12	6x12	8x12	
16	3x16	4x16	5x16	6x16	8x16	10x16
18	3x18	4x18	5x18	6x18	8x18	10x18
20	3x20	4x20	5x20	6x20	8x20	10x20
25	3x25	4x25	5x25	6x25	8x25	10x25
30		4x30	5x30	6x30	8x30	10x30
35		4x35	5x35	6x35	8x35	10x35
40		4x40	5x40	6x40	8x40	10x40
50			5x50	6x50	8x50	10x50
55						10x55
60						

Disponible:	Acier Inoxydable	A2	A4	
	Acier au carbone	8.8	10.9	12.9